



# GAT MONTHLY MEMBERSHIP PROGRESS REPORT

Results as of: 6/30/2022

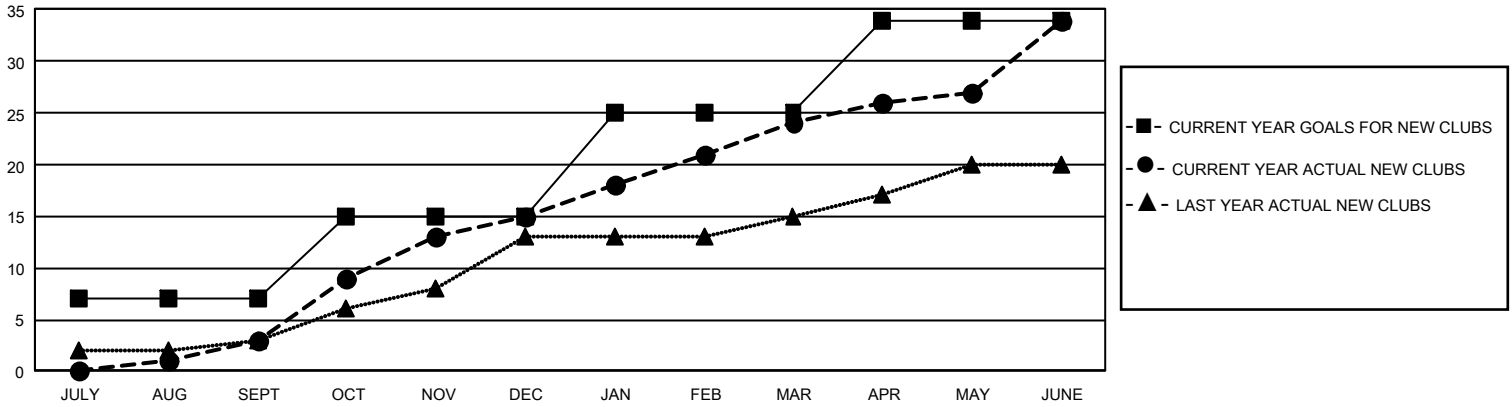
## GMT Constitutional Area 8, Group E

REPORT DOES NOT INCLUDE CLUBS IN UNDISTRICTED AREAS.

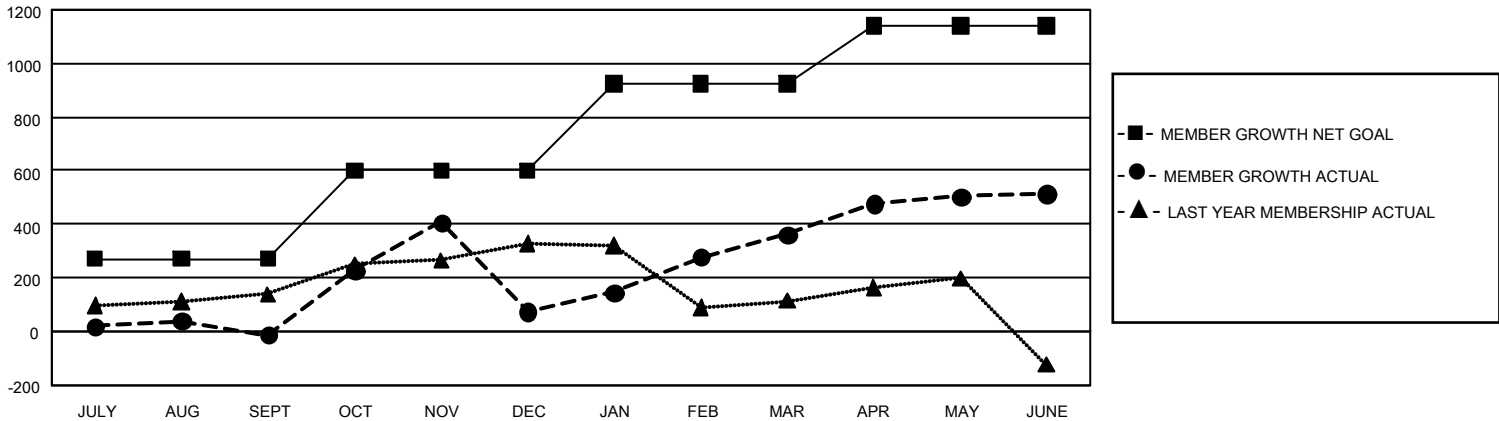
Clubs			
RESULTS FOR 2021-2022			
QUARTER	NEW CLUB GOAL	NEW CLUBS	DROPPED CLUBS
JULY/AUG/SEPT	21	3	8
OCT/NOV/DEC	24	12	12
JAN/FEB/MAR	30	9	3
APR/MAY/JUNE	27	10	3

Members			
RESULTS FOR 2021-2022			
QUARTER	MEMBER GROWTH NET GOAL	MEMBER GROWTH ACTUAL	DROPPED MEMBERS ACTUAL (including transfers)
JULY/AUG/SEPT	270	352	307
OCT/NOV/DEC	330	703	548
JAN/FEB/MAR	325	557	218
APR/MAY/JUNE	217	871	657

GOALS AND ACTUAL NEW CLUBS CUMULATIVE



GOALS AND ACTUAL MEMBERS CUMULATIVE



<b>DROPPED CLUBS: 26</b>  <b>DROPPED MEMBERS</b> DECEASED 38 CLUB CANCELLED 490 OTHER 1,202 <b>TOTAL 1,730</b>	219 CLUBS OF 291 ADDED 1 OR MORE NEW MEMBERS	<b>GENDER DISTRIBUTION</b> MALE 4,069 (58.07%) FEMALE 2,930 (41.82%) NON BINARY 1 (0.01%) PREFER NOT TO ANSWER 7 (0.10%)
	<a href="#">CLICK HERE FOR CUMULATIVE MEMBERSHIP DATA</a>	TOTAL FAMILY UNIT MEMBERS 1,610 FAMILY MEMBERS PAYING HALF DUES 952